

GroWorth
Real Solutions
building trustworthy relations

GroWorth
Nightingale High profile lifestyle embedded in serenity



Growth *Nightingale* Galore of lavish amenities!



Growth- Redefining the virtues of transparency and efficiency

Every company has a mission and core set of values which are the foundation of that organization. Growth too, has always kept its ethical norms stringent even in the most trying situations. Last couple of years has seen Growth establish formidable goodwill and trust in the market. The company has sold 15 clear titled real estate projects in Nagpur and Pune and has been pioneer in taking Nagpur's real estate business to overseas.

Dynamic perceptions and remarkable foresightedness has enabled the company to carve a niche for itself in the overseas market and establish a huge clientele base at UK, USA and Gulf. The company is committed to provide better and good value residential and investment projects to its customers. It has investor friendly offices located in UAE apart from Nagpur and Pune and is the first real estate company from Central India to have registered office in Hamriyah free zone, UAE.

Growth Nightingale is an ambitious construction venture from the company with different lifestyle residential options to cater to different needs and budget. With this enterprising project, the company wishes to widen its work area and institute a line up of elite customers and a track record of prestigious ventures in the market.

Vision of a great man, privilege for some.



Design Concepts
Consulting, Architects & Engineers



Ar. Girish Shirsalkar- The man behind our Architecture

“When legendary hands are behind creation of architecture, it becomes a matter of prestige to own a share in it”.

Ar. Girish Shirsalkar, the man behind the architecture of this elite venture of Groworth Nightingale is a renowned architect par excellence, who has designed many elite constructions and buildings in Dubai. He is the man with unique aesthetic sense which is vividly highlighted in all his designs. Dedication is the underlying principle for him due to which he has achieved many illustrious feats in his life. He completed his graduation in 1977 from India's leading architectural college, Sir J.J College of Architecture. He completed his apprenticeship with famous architect Mr. Charles Correa and also worked with him for some time. He worked in a British firm Fitch & Co. as an architect and gained valuable international experience.

From there on in 1983 Ar. Girish Shirsalkar founded Design Concepts. He has designed many famous structures like Silver Stallion Towers, Santorini Township, Acropole, Nur Tower, Dubai World Central, etc. The firm specializes in urban planning and architectural designs. The company has completed over 100 projects across Dubai and world over and has gained recognition for integrated state of the art design with project development. The major clientele of Design Concepts include Siemens, L.G., LuLu, Emirates Airlines, BMW, Rolls Royce, Etisalat, Nissan, Petrochem, Stallion Properties, Motorola etc. and many more elite groups.

Groworth is proud to be associated with such a renowned architect and in the form of Groworth Nightingale is all set to present the dynamism of superior architectural qualities in Nagpur for the first time. The various villas, bungalows, Duplexes and flats made available in this scheme are designed to match the international standard, holding an appeal for global, national and local community as well.

Best of life always!



Growth
Nightingale

Growth Nightingale has everything one can relate to high profile residential choices. Yes, it is a highly elite and ambitious project designed by world class architect. Yes, it has all the regal amenities and residential options like Budget Bungalows, Deluxe villas, flats etc. to match up to the standards of classy lifestyle. Yes, it is placed in one of the most happening areas of India- Wardha road, Nagpur. And yes, it is backed by the authentic and trustworthy efficiency embedded company which is Growth. But that's only the starting point. There is more to Growth Nightingale than all these attributes.

It is the inherent motive behind the launch of this project- a vision to provide different types of refreshingly classy yet affordable projects with internationally acclaimed dimensions of construction and architecture. Growth Nightingale is an effort to introduce lifestyle culture amongst the people who love to live life with full zeal and enjoy the luxuries and elegance of modern times.

Growth Nightingale is a challenge to the extent of your dreams and expectations!

Rediscover the mellifluous moments of togetherness



Moments of pleasure are rare. But they can be enhanced and enjoyed if one finds a right place for its fulfillment. With Villa Victoria, a deluxe living space from Groworth Nightingale, one can regale in the lavishness of lifestyle culture and enjoy more of everyday. Why? Because every attribute of this elegant home is more than regular. Nothing generalized. Supremely special and exclusively distinct.

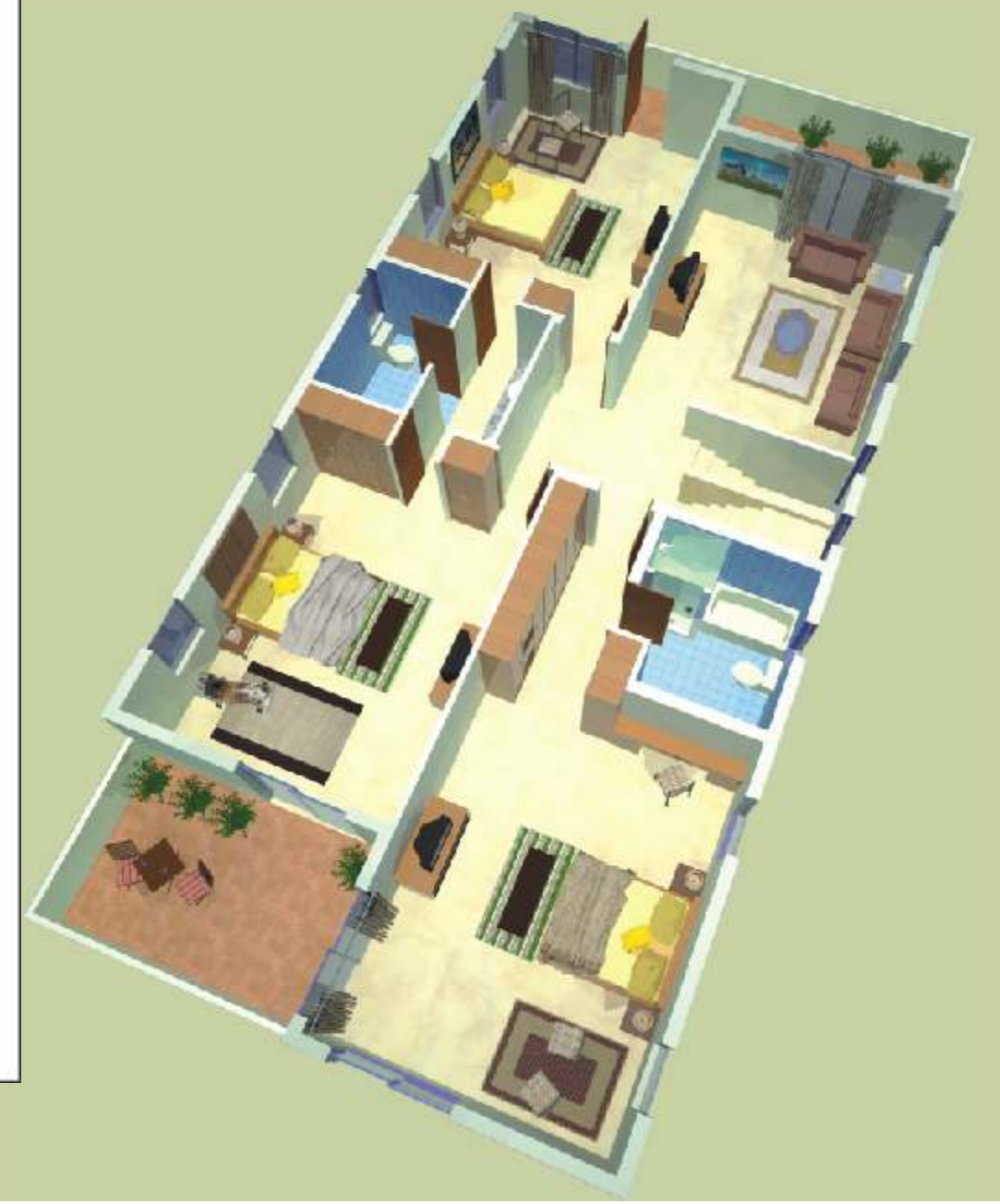
Highly spacious rooms to accommodate every thought, feel, need and person of your desire, it is the perfect choice for those who respect the privacy of others and also like to have some secret intimate moments for themselves. With car parking for two and a separate guest room, along with airy and roomy kitchen, dining room and living room, the construction in itself defines the flavor of elegance and freshness. Three more bedrooms, including the master bedroom and a separate audio and video room to relax and enjoy poses a picture of a cozy habitat.

Nightingale
VILLA VICTORIA
 (Deluxe Villa)

GROUND FLOOR PLAN



FIRST FLOOR PLAN



Nightingale
MAJESTICA
(Club House)
Imperial exclusivity



Man being a social animal, a dormant need to have fun and play in life is always secreted within him. 'All work and no play' aptly describes today's hectic work schedule. Very rarely one gets time to go out and fulfill the need of exercise, entertainment and personal enhancement. Clubhouse Majestica is designed for the residents of Groworth Nightingale with the purpose of fulfilling all the physical and mental needs just in the neighborhood. The amenities include reception, community hall, Billiards room, restaurant, library, table tennis room, volley ball court, tennis court, joggers track, swimming pool, wash rooms, locker rooms, changing rooms, gymnasium, massage parlor, steam & sauna.



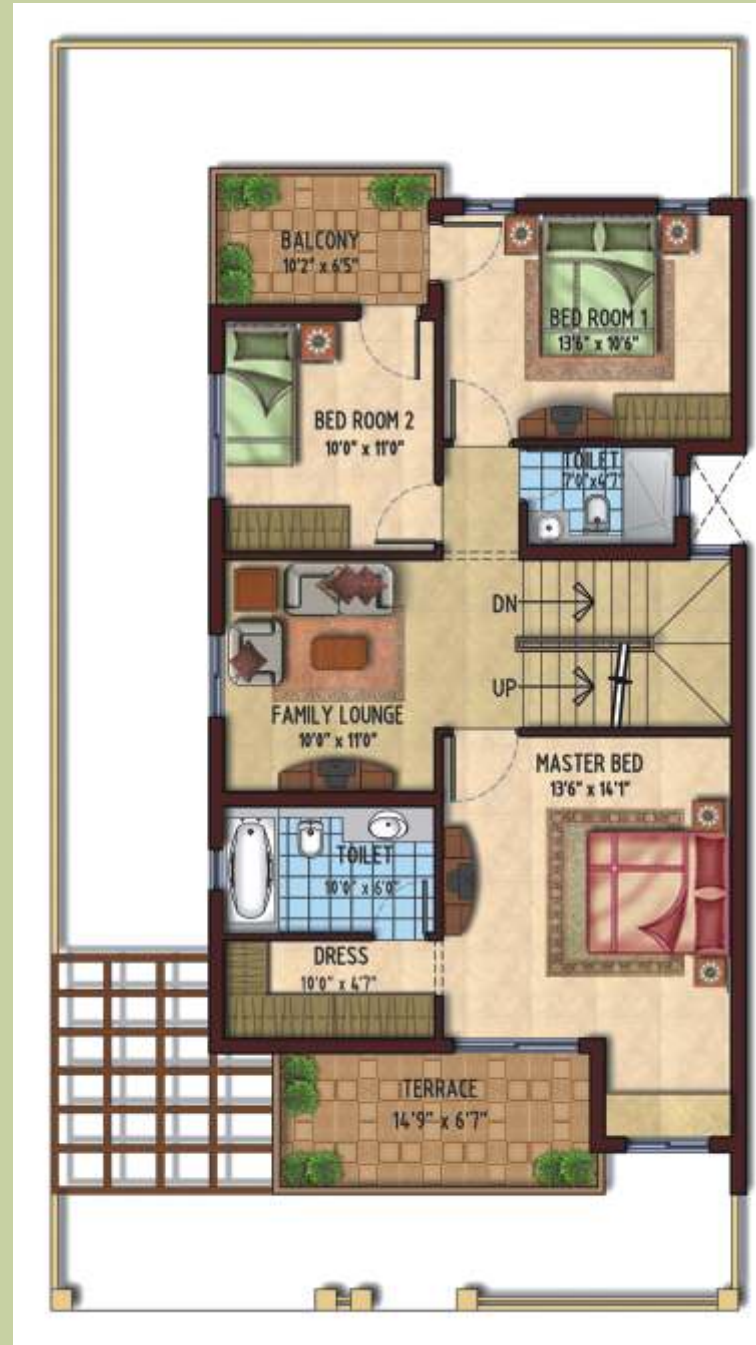
Rejuvenate in the scented breath of liveliness.





GROUND FLOOR PLAN

Nightingale
VILLA CAMELIA
(Budget Villa)



FIRST FLOOR PLAN



Harmonizing moments of peace and gaiety



Nightingale
CLASSIC
(2 BHK & 3 BHK Flats)



Nightingale
CLASSIC
 (2 BHK & 3 BHK Flats)



2 BHK FLOOR PLAN



3 BHK FLOOR PLAN





275, Anant Kamal Complex, 3rd floor, Laxminagar, Nagpur-440 022. •**Mobile** : 09422105938, 09823048489. •**Telefax** : +91-712-6459202,
•**Email** : invest@growth.net •**Web** : www.growth.net

This brochure is conceptual in nature and is by no means legal document. Growth Real Solutions reserves the right to add delete or alter any specification, elevation, floor plan. **Note** : Details & dimensions shown on floor plan are approximate & subject to change if necessary.